

# Joseph L. Searles III Stadium



**KILLEEN INDEPENDENT SCHOOL DISTRICT  
JOSEPH L. SEARLES III STADIUM  
4400 Chaparral Road  
Killeen, TX 76542**

**KISD ATHLETICS ADMINISTRATION**

777 North Twin Creek Drive  
Killeen, TX 76543  
Ph. 254-336-2672

Matthew Carroll – Executive Director for Boys Athletics  
Latisha Williams – Executive Director for Girls Athletics  
Kevin Lawler – Assistant Director for Athletics  
Lanny Williams – Assistant Director for Athletics  
Kristie Yonker – Athletics Technician  
Sheila Sortman – Athletics Secretary  
Robert Lawrence – Stadium Manager

**TICKETS**

- Tickets for varsity football games can be purchased online at the following link:

<https://www.etix.com/ticket/v/21308/killeen-football-visitor-side>



- Ticket gates will be open 1 ½ hours prior to game time.
- Students are not allowed in and out privileges; re-entry requires the purchase of a new ticket.
- Patrons without tickets must enter through the Pass Gate and show proper credentials.

## EVENT CLEAR BAG PROCEDURE

In an effort to improve safety and security, a Clear Bag Procedure will be instituted beginning July 1, 2024, for spectators attending any event held within a Killeen ISD athletic facility that requires a ticket to enter. Participants performing in these events will not be required to utilize clear bags (e.g., athletes, cheer, band).

### Approved bags include:

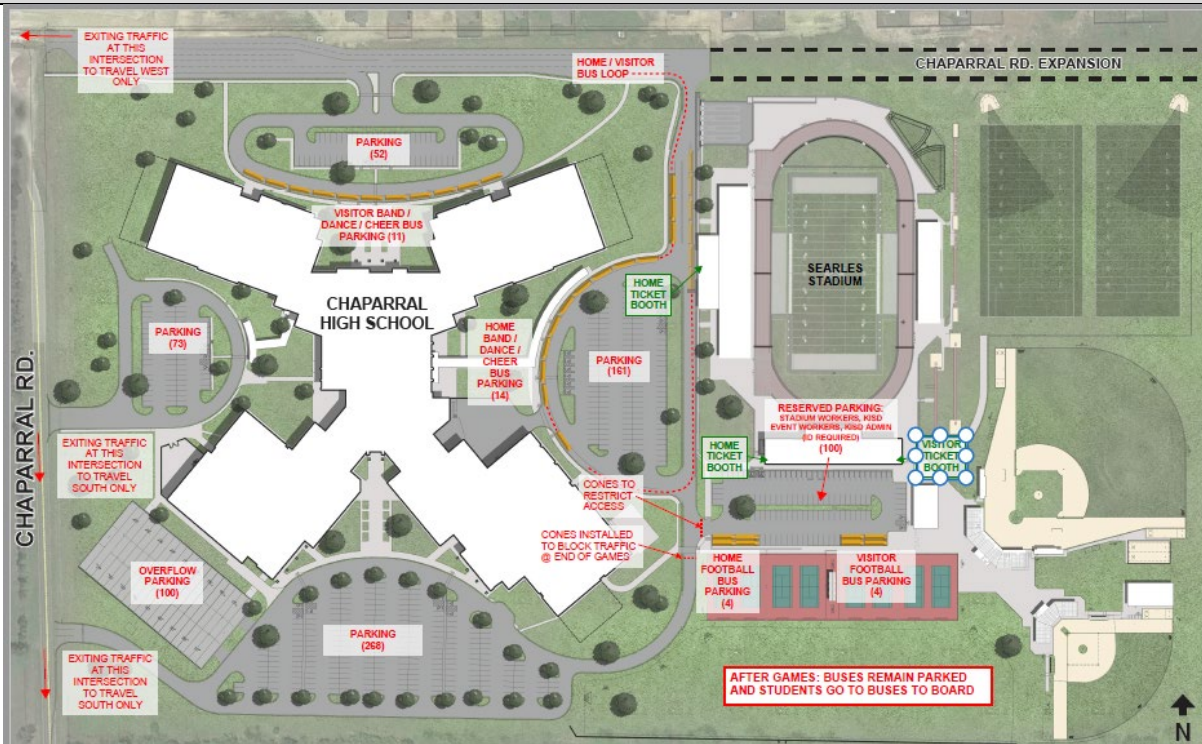
- Clear bags/backpacks not exceeding 12" x 6" x 12"
- One (1) gallon plastic re-sealable storage bags
- Small non-clear bags no larger than 4.5" x 6.5"

### Prohibited bags include, but are not limited to:

- Backpacks that are not clear
- Binocular case (binoculars may be worn around the neck)
- Briefcases
- Camera bags
- Computer bags
- Coolers
- Diaper Bags
- Fanny packs
- Seat cushions with pockets and/or zippers

An exception will be made for medically necessary items after proper inspection at a gate designated for this purpose.

## PARKING



- Parking attendants will ensure the buses are parked correctly.
- Tailgating is prohibited.

### PLAYING FIELD REGULATIONS

- Dressing Rooms will be open 2 ½ hours before game time.
- Only water can be used on the field or track. No flavored drinks, such as Gatorade, may be used.
- Use of tobacco, sunflower seeds, and/or gum is prohibited.
- No metal cleats may be worn on the field or track.
- Absolutely no glass bottles, cans, or food allowed on the field or track. This includes cheerleaders and their support staff.
- All equipment, such as training tables, fans, and heaters, must have a protective base.
- No noise makers, cannons, or confetti.
- Band props must not mark or scar the field (chairs, ladders, etc.).
- All team personnel that are not in dress that would identify them as essential personnel must have a sideline pass. Cheerleaders that are in game uniform do not need a pass, but any support staff not in uniform must have a pass.
- Spectators are not allowed on the field or track before or after the games.

### STADIUM SEATING/REGULATIONS

- Wheelchair accessibility and viewing are available on both sides.
- Authorized personnel only will be allowed to cross over to the opposing side.
- No climbing over the rails onto the track.
- Air horns and/or bull horns are not permitted.
- Alcohol, tobacco, and firearms are prohibited, by law, on school property.
- No outside food or drink.
- No individual coolers, ice chests, and large food/beverage containers.
- No glass containers and bottles allowed in the stadium.
- No spectators will be allowed to sit in the end zones.

### PRESS BOX

- The press box will be open to coaches, filmers, and statisticians 2 hours prior to game time.
- No more than (3) student filmers are allowed in the press box. Hospitality is for adult workers/staff.
- Visitor Radio is located on the 3<sup>rd</sup> floor. Please email [kristie.yonker@killeenisd.org](mailto:kristie.yonker@killeenisd.org) if Visitor Radio will be in attendance.
- Scouts will be seated on a space available basis on the 3<sup>rd</sup> floor. Only teams scouting up to two weeks out will be allowed in the press box. Only 3 scouts allowed per campus. Please email [kristie.yonker@killeenisd.org](mailto:kristie.yonker@killeenisd.org) no later than 3 p.m. Tuesday of game week to reserve space. Check in at the elevator lobby to obtain a 3<sup>rd</sup> floor pass.